



INNOVATION WORKING FOR YOU

**LR30
Lawn Roller
Operator's and Parts Manual**



REIST Industries Inc.
100 Union Street
Elmira, Ontario, Canada
N3B 3L7

Phone: 519-669-1501
Fax: 519-669-3021
Toll Free: 1-877-467-3478
www.reistindustries.com

Effective Serial Number T3146

Contents

INTRODUCTION.....	4
PRODUCT SPECS	5
GENERAL SAFETY PRECAUTIONS	5
MAINTENANCE	7
SPEED & NEUTRAL ADJUSTMENT	8
TRANSPORTING.....	9
ITEM LOCATOR:	10
HANDLE & REAR ROLL PARTS	11
TOP DRIVE PARTS	12
LINKAGE PARTS.....	13
BOTTOM DRIVE PARTS	14
PARTS LIST	15

Record your product information for future reference:

Model Number: _____

Serial Number: _____

In Service Date: _____

Sold By: _____

INTRODUCTION

Thank you for choosing the REIST LR30 Roller.

We feel confident that this equipment will meet your expectations in workmanship, reliability and performance when used as designed. This manual is to assist you with the safe operation of the REIST LR30 Roller. It also has a parts list to help you when replacement parts are required. Any person who will be assembling, maintaining, or operating this product, are required to read and completely understand the information and instructions contained in this manual. Always obtain further assistance by contacting the dealer from which this product was purchased or by contacting REIST Industries at the telephone number or address below. Keep this manual available for reference whenever this product is being handled or used and we recommend that it is reviewed periodically and before seasonal use. Provide this manual to any new owners and/or operators and ensure they fully understand the safe operation of this equipment before it is placed in service.

Replacement copies of this manual are available for downloading at:
www.reistindustries.com

Innovation Working For You

REIST Industries Inc.

100 Union Street
Elmira, Ontario, Canada
N3B 3L7

Phone: 519-669-1501
Fax: 519-669-3021
Toll Free: 1-877-467-3478

The illustrations and information contained within this manual were current at the time of publication. Under our policy of continuous improvement, we reserve the right to change specifications and designs without prior notice. The illustrations do not necessarily show the standard version of product offered by REIST Industries.

PRODUCT SPECS

LR30 Lawn Roller

- 35-7/8" wide x 62 long x 45-1/2" high
- Drum width 30"
- Dry Weight 520 lb (236 kg),
- Drum Filled Weight 910 lb (412)
- Hydrostatic drive
- 5.5 hp Honda Engine

GENERAL SAFETY PRECAUTIONS

Careful operation is the best assurance against accidents. It is the owner's responsibility to make sure that all operators read and understand this manual and follow the recommendations, cautions and warnings before operating the equipment.

Familiarize yourself with all controls and know how to quickly stop the equipment and all rotating parts in the case of an emergency.

Never let an untrained person or a child operate equipment.



WARNING!

DO NOT MODIFY THE REIST EQUIPMENT

Modifications may weaken the integrity of the equipment and may impair the operation, safety, and performance of the product. When making repairs, only qualified technicians using the manufacturer's genuine parts, following authorized instructions, shall attempt the repair. Never remove guarding or other safety device. Any modifications must be sanctioned in writing by an authorized representative of the manufacturer.



WARNING!

MAINTAIN AND REPAIR EQUIPMENT SAFELY

- Do not wear loose clothing, or any accessories that can catch in moving parts
- If you have long hair, cover or secure it so that it does not become entangled in the equipment
- Work on a level surface in a well-lit area.
- Always secure and support it to prevent unintentional movement
- Use the correct tool for the job at hand. Make sure they are in good condition for the task required
- Wear the protective equipment specified by the tool manufacturer
- Use care when working on hydraulic systems and understand how to check for and release trapped hydraulic pressure



WARNING!

READ OPERATOR'S MANUAL BEFORE OPERATING

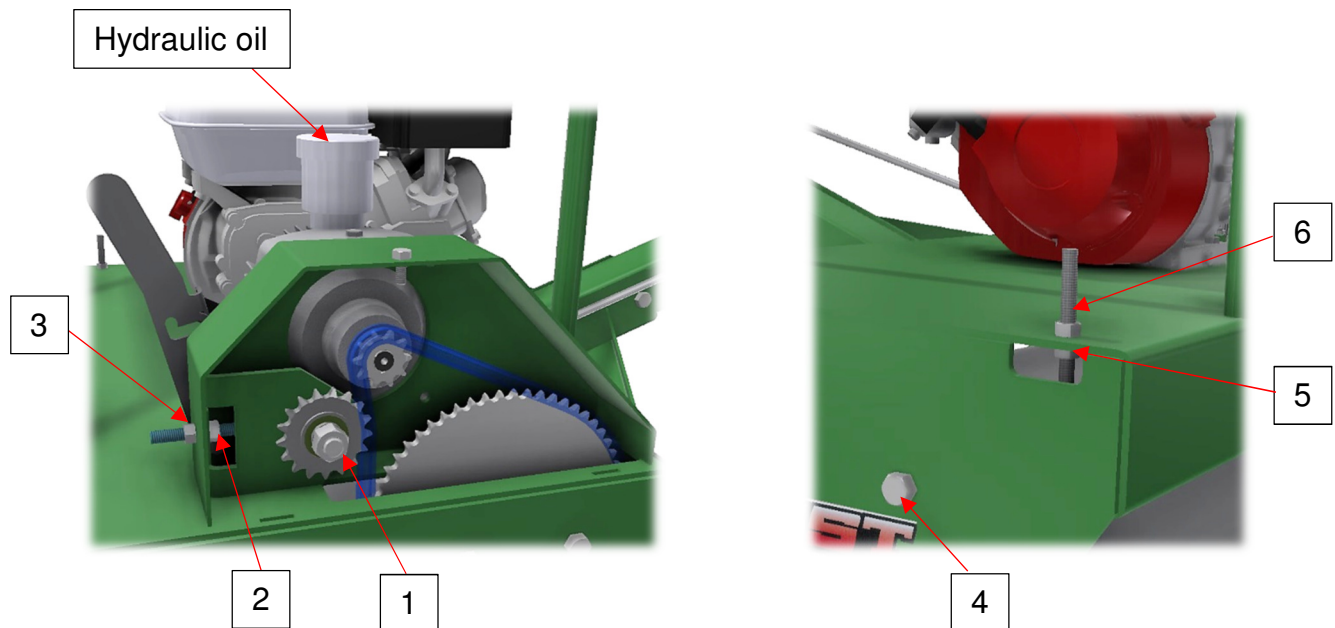
Do not operate equipment until you are completely trained by a qualified operator in how to use the controls, understand the machine's capabilities, dimensions, and all safety requirements. Refer to your operator's manual for these instructions.

- Do not operate an engine in confined or non-ventilated area
- Do not perform adjustments or repairs with the engine running
- Do not operate on excessive inclines or side slopes– be careful when turning on slopes as a rollover condition may exist
- Keep bystanders away from the machine when in operation
- Be aware of pedestrians
- Know how to quickly stop the equipment in the case of an emergency

MAINTENANCE

Refer to the General Safety Precautions, in previous pages of this manual before performing any maintenance.

1. At the beginning of each season, ensure that all fasteners are properly torqued, all safety guards are in place and that operator's manual is reviewed and understood
2. Daily, check that oil is at level mark on transmission reservoir (approx. 1/8" from bottom). Check when cool. When hot the level in reservoir will rise.
3. Daily, check engine oil.
4. Keep roller chains snug.
To tighten top roller chain:
 - remove shield
 - Loosen nut 1 & 3
 - Tighten nut 2 till slack is out of chain
 - Tighten nut 3 & 1
 - Install shieldTo tighten lower roller chain:
 - Loosen nut 4 & 5
 - Tighten nut 6 till slack is out of chain
 - Tighten nut 5 & 4
5. Remove water from drum if freezing could occur.



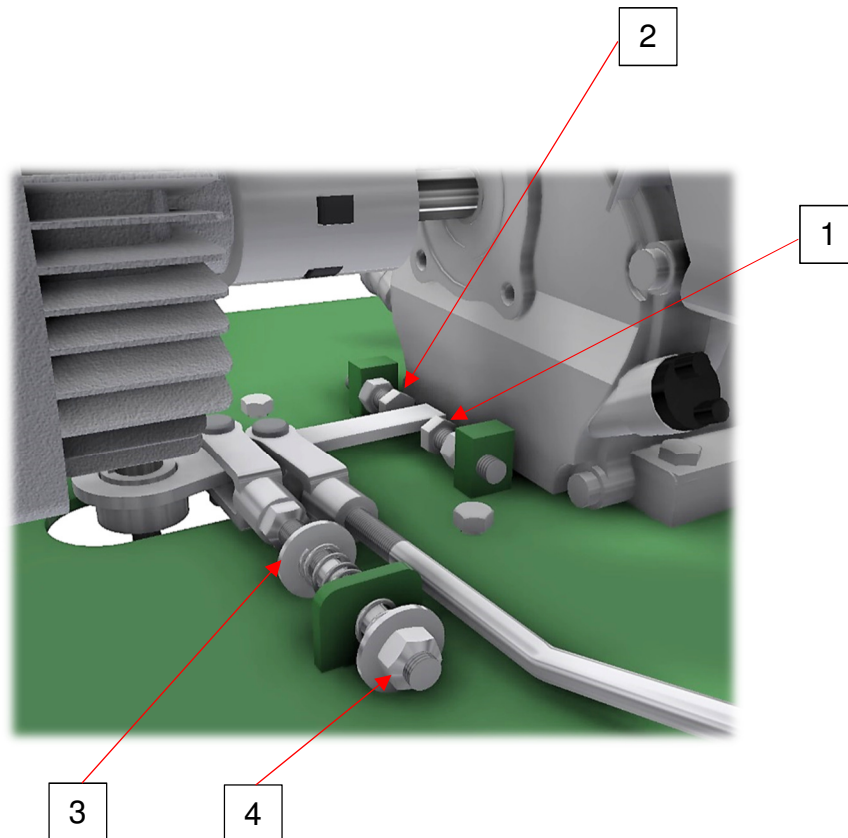
SPEED & NEUTRAL ADJUSTMENT

Speed Adjustment:

There are two stop bolts to adjust speed. Number 1 is for forward speed and Number 2 is for reverse speed. Retracting the bolt, the speed will increase. Turning the bolt in, the speed will be reduced. Tighten the nuts when adjustment is finish.

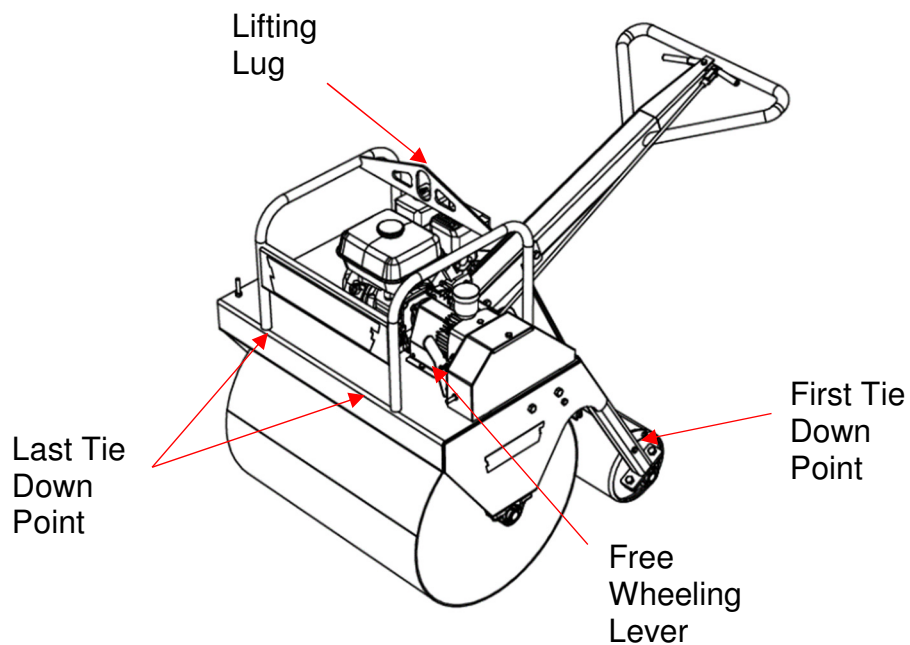
Creeping Adjustment:

The Neutral Linkage assembly is what puts the transmission into neutral position. If roller creeps, first check that the forward and reverse lever and linkage is free and isn't binding anywhere. If that checks out fine, then adjustment needs to be made. Turn nuts number 3 & 4 left or right until creeping stops. When adjusting, turn the nuts number 3 & 4 the same amount and the same direction.

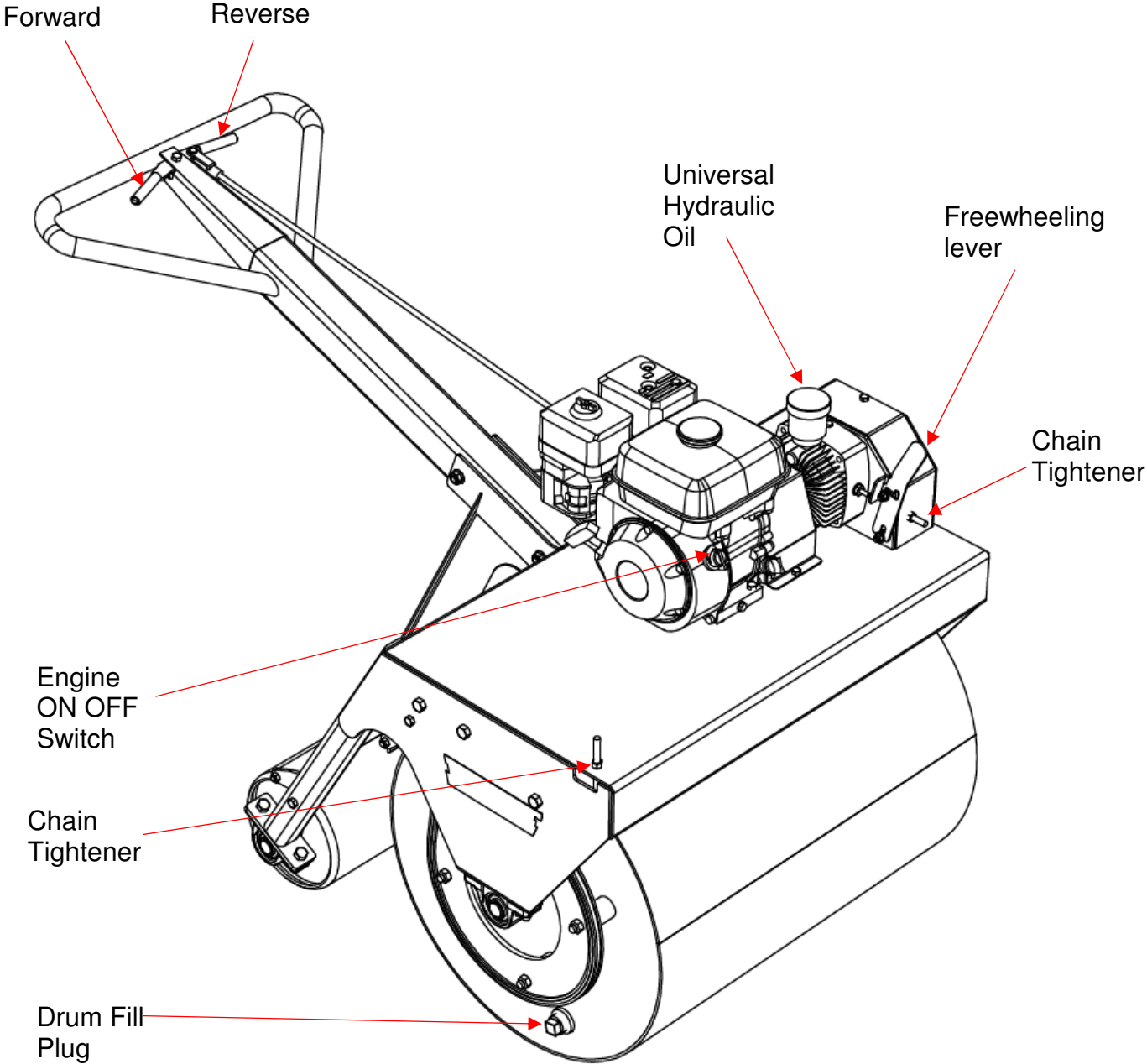


TRANSPORTING

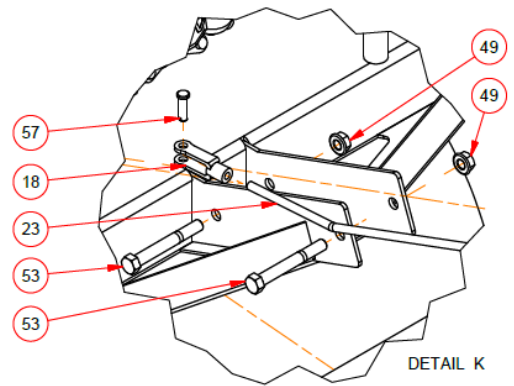
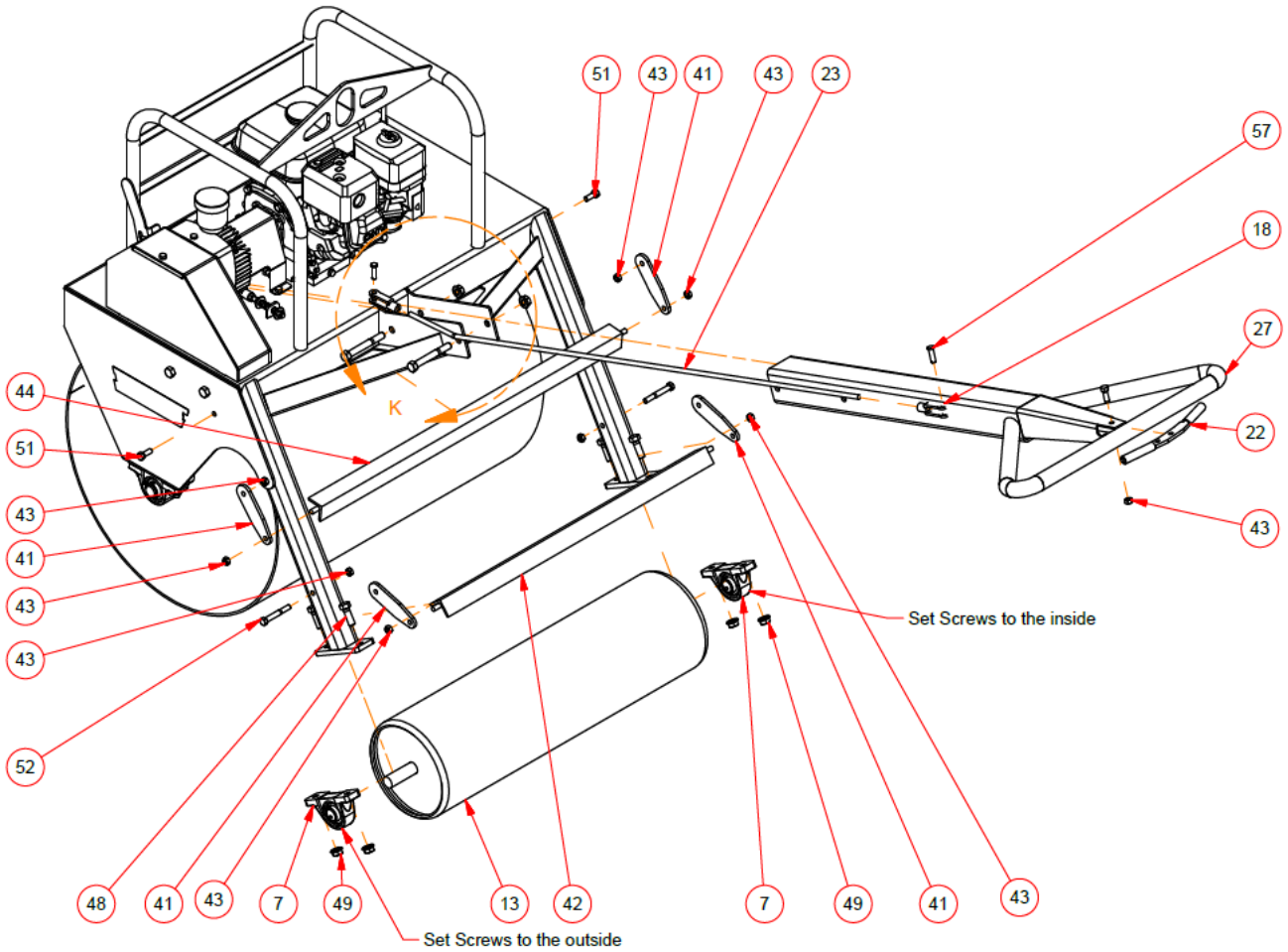
- Whether transporting on a truck or trailer, make sure machine is tied down with appropriate chains or straps. It can cause serious damage or injury if failing do so.
- To keep roller from tipping when securing, tie down at rear roll first then at front.
- Always adhere to the local laws and regulations concerning transporting equipment.
- If Roller needs to be moved without engine running, use lever as in figure below, push lever towards transmission and down to lock. This puts transmission into freewheeling mode.
- Roller can be lifted by lifting lug above fuel tank.



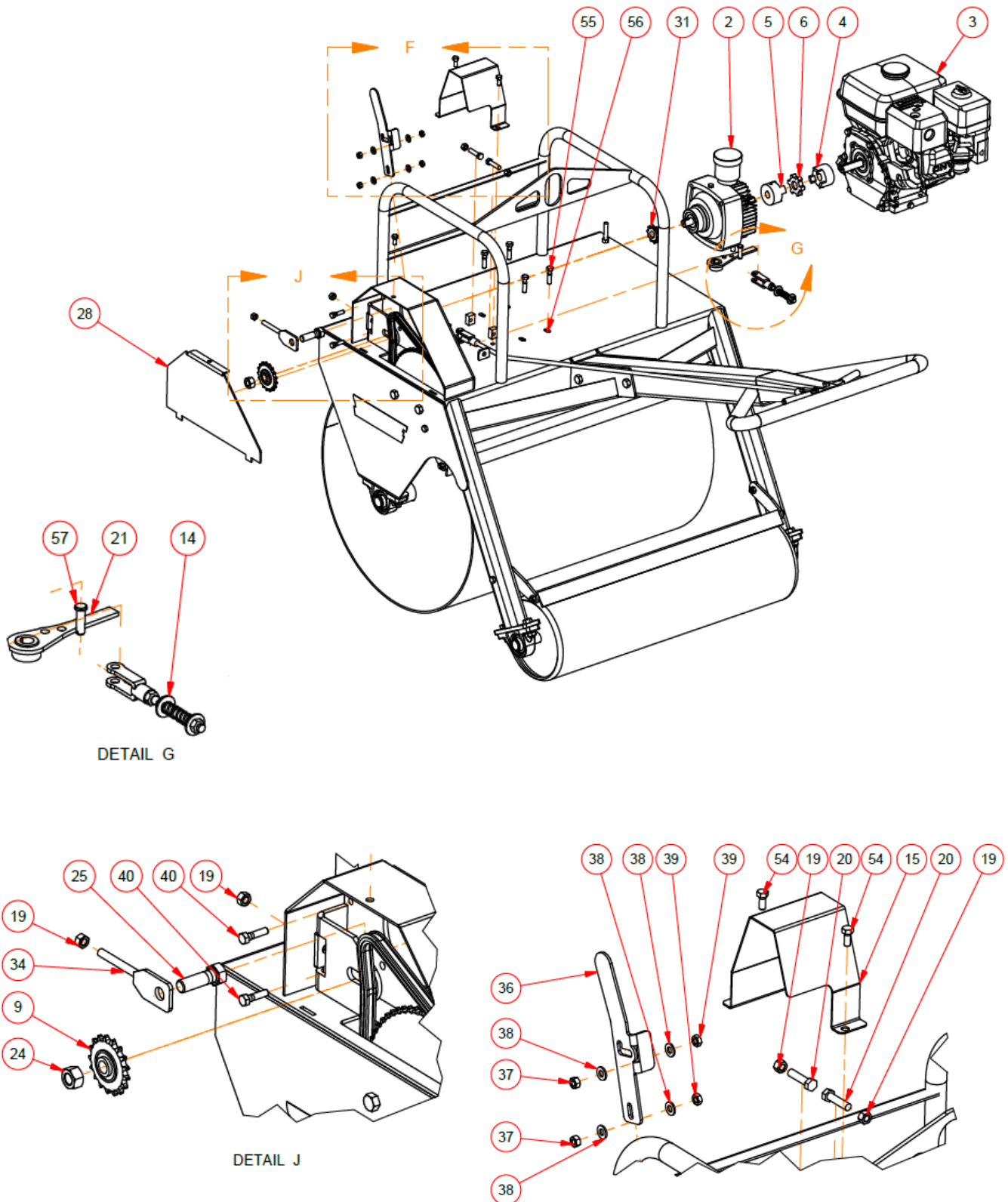
ITEM LOCATOR:



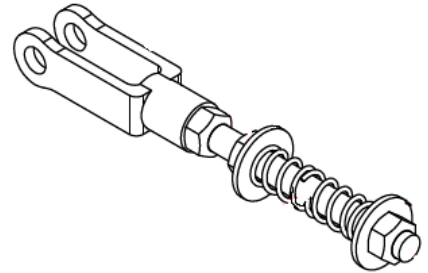
HANDLE & REAR ROLL PARTS



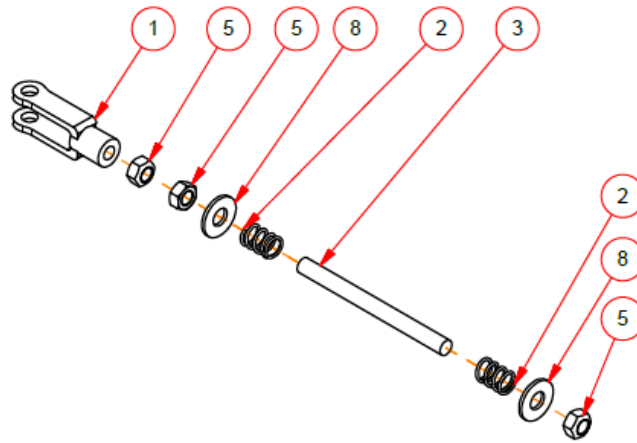
TOP DRIVE PARTS



LINKAGE PARTS

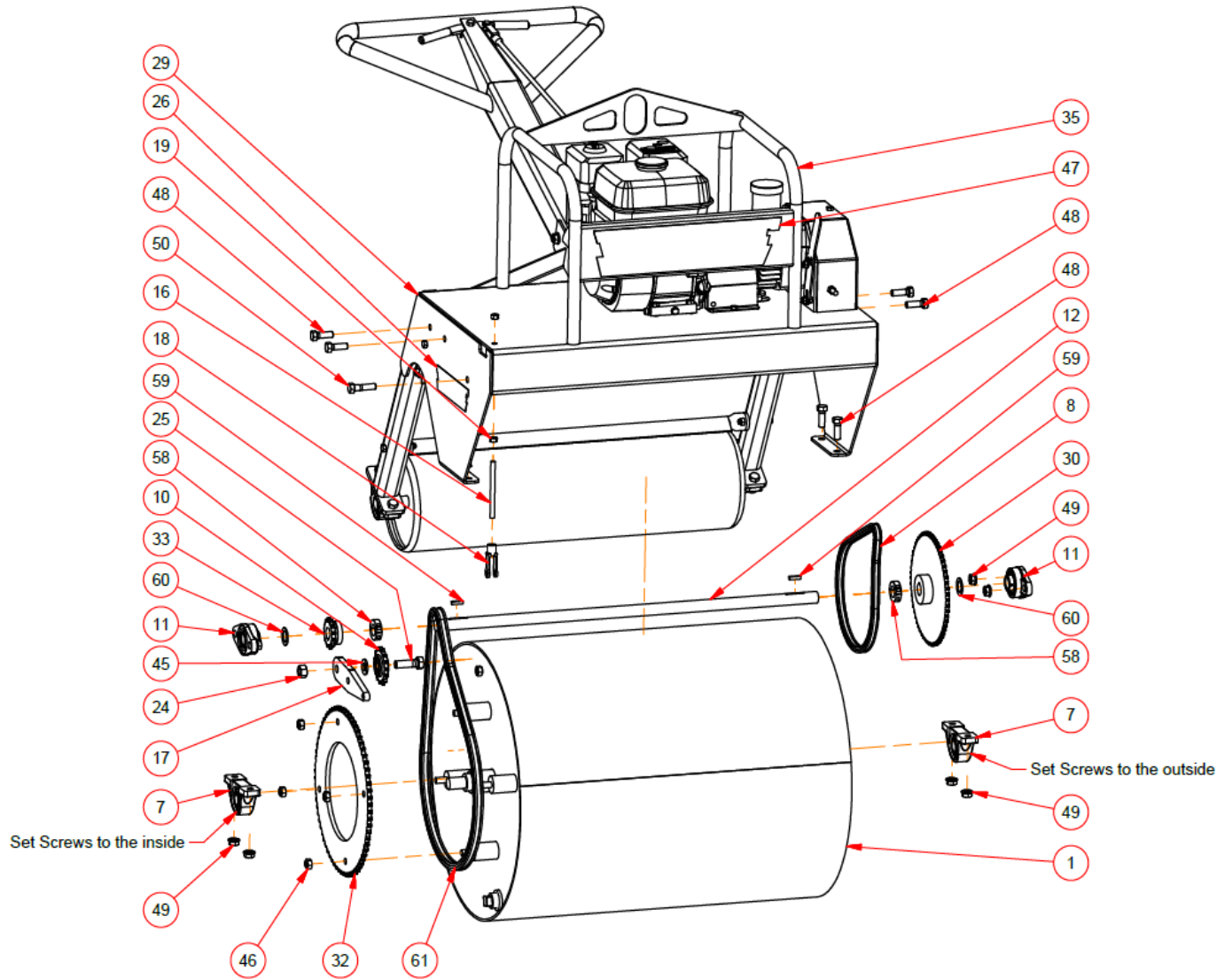


102498
Neutral Linkage Assembly



Parts List			
ITEM	QTY	PART NUMBER	DESCRIPTION
1	1	12CL	
2	2	72638S	Compression Spring
3	1	100569	Threaded Rod
5	3	38FLN	NF Lock Nut
8	2	38F	Flat Washer

BOTTOM DRIVE PARTS



PARTS LIST

Parts List				Parts List			
ITEM	QTY	PART NUMBER	DESCRIPTION	ITEM	QTY	PART NUMBER	DESCRIPTION
1	1	107796	Packer Roll	32	1	106184	Sprocket 50_72
2	1	700-004	Hydraulic Unit	33	1	50B12x1	sprocket
3	1	GX160UTQH6	5.5 Honda	34	1	107797	Tightener
4	1	L095-0.75	Lovejoy-Coupling	35	1	107815	Guard
5	1	L095X17MM	Lovejoy-Coupling	36	1	107826	Release Latch
6	1	L095i	LoveJoy Spider	37	2	516N	Hex Nut
7	4	UCP205-100	Pillow Block Bearing	38	4	516FL	BP Flat Washer
8	1	40RC	Roller Chain 70 pins	39	2	516CLN	NC Lock Nut
9	1	20401708	Idler Sprocket	40	2	516114	Hex Bolt
10	1	20501510	50 Idler Sprocket	41	4	107843	Scraper Link
11	2	UCFL205-100	2 Bolt Flange Bearing	42	1	107847	Scraper
12	1	106153	Shaft	43	9	38CLN	NC Lock Nut
13	1	107798	Small Roll	44	1	107848	Scraper Top
14	1	102498	Neutral Linkage Assembly	45	1	58FL	BP Flat Washer
15	1	5113	Coupler Shield	46	5	12CLN	NC Lock Nut
16	1	106164	Tightener Thread Rod	47	1	RD105	Reist Decal
17	1	106165	Tightener Arm	48	12	12112	Hex Bolt
18	3	12CL		49	14	12FSLN	Flange Nut
19	6	38N	Hex Nut	50	1	12*2	Hex Bolt
20	2	FT-9	Fully Threaded Bolt 1-1/2	51	3	381	Hex Bolt
21	1	107802	Transmission Lever	52	2	38234	Hex Bolt
22	1	5111	Finger Lever	53	2	12*4	Hex Bolt
23	1	106176	Drive Linkage Rod	54	3	51634	Hex Bolt
24	2	58N	Hex Nut	55	4	38112	Hex Bolt
25	2	582	Hex Bolt	56	4	38FSLN	Flange Nut
26	2	RD106	Reist Decal	57	3	38CP	3/8x1-1/4 Pin
27	1	106179	Handle	58	2	SCSD100	Shaft Collar Double Split 1
28	1	106180	Shield	59	2	14KS1	Keystock
29	1	106181	Main Frame	60	2	1M	Machinery Washer
30	1	106183	Sprocket 40B60	61	1	50RC	Roller Chain (90 pins)
31	1	40B10X17MM	Sprocket				

WARRANTY INFORMATION

All new REIST machinery is warranted to be free from defects in material or workmanship, which may cause failure under normal usage and service when used for the purpose intended for a period of 12 months. This warranty applies only to a new REIST product, there being no warranty of any nature in respect to new products that have been modified or altered, repaired, neglected, or used in any way, which, in the opinion of REIST adversely affects its performance.

In the event of failure of a part or parts, and upon inspection, REIST is satisfied that failure is due to defective material or workmanship within 12 calendar months from the date of delivery to an end user, such defective part or parts will be repaired or replaced by REIST Industries Inc. It is the responsibility of the buyer, at his expense, to transport the machine or equipment to the manufacturer service shop or to an authorized service depot or, alternatively, to reimburse REIST for any travel or transportation expense involved in fulfilling this warranty.

When requested by REIST, part or parts shall be returned for inspection, transportation prepaid, to a place designated by REIST. IN NO EVENT, SHALL THE BUYER BE ENTITLED TO RECOVER FOR INCIDENTAL OR CONSEQUENTIAL DAMAGES, INCLUDING, BUT NOT LIMITED TO, LOSS OF PRODUCT, INCONVENIENCE, RENTAL OR REPLACEMENT EQUIPMENT, LOSS OF PROFIT, OR OTHER COMMERCIAL LOSS.

This warranty becomes void and null if the equipment is modified, breaks down as the result of an accident, is not operated according to manufacturer's recommendations, damaged by negligence or if maintenance has not been carried out as specified.

THIS WARRANTY IS NOT TRANSFERABLE

Proof of Purchase – Retain for your records

Date of Purchase (yyyy/mm/dd)		Model	Serial #	
Dealer Purchased From		City	State or Province	Country
First Name		Last Name	Phone Number (include area code)	
Address			State or Province	Country
City	Postal Code	Return to: REIST Industries Inc. 100 Union St., Elmira, Ontario, Canada N3B 2Z2 (519) 669-1501		

Remove bottom section and return to REIST Industries within 30 days of purchase



Proof of Purchase

Date of Purchase (yyyy/mm/dd)		Model	Serial #	
Dealer Purchased From		City	State or Province	Country
First Name		Last Name	Phone Number (include area code)	
Address			State or Province	Country
City	Postal Code	Return to: REIST Industries Inc. 100 Union St., Elmira, Ontario, Canada N3B 2Z2 (519) 669-1501		

REIST Industries Inc.
100 Union Street
Elmira, Ontario, Canada
N3B 2Z2

AFFIX
POSTAGE